



<http://www.canon.com/c-park/en/>



Assembly Instructions

..... **Mountain fold**(dotted line) ——— **Scissors line**(solid line)
*Make a mountain fold. *Cut along the line.

- - - - - **Valley fold**
(dashed and dotted line)
*Make a valley fold.

▲ **Black triangle**
Glue here

△ **White triangle**
Glue the back

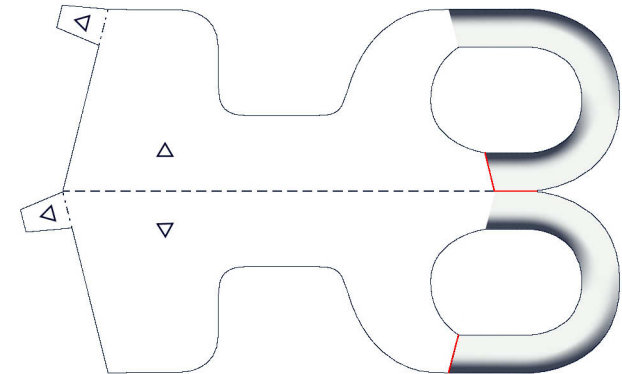


scissors, paste, a used ballpoint pen (tracing along the fold lines makes them easier to fold)

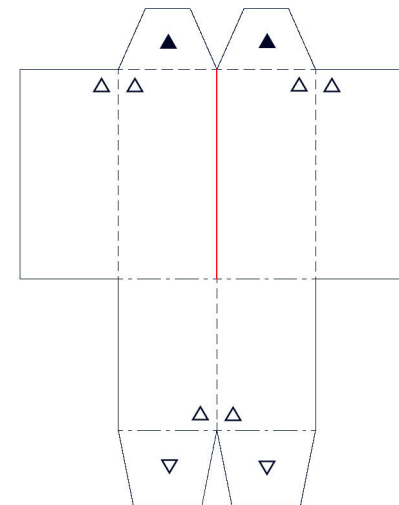


Caution: Glue, scissors, and other tools may be dangerous to young children so be sure to keep them out of the reach of young children.

● Part C



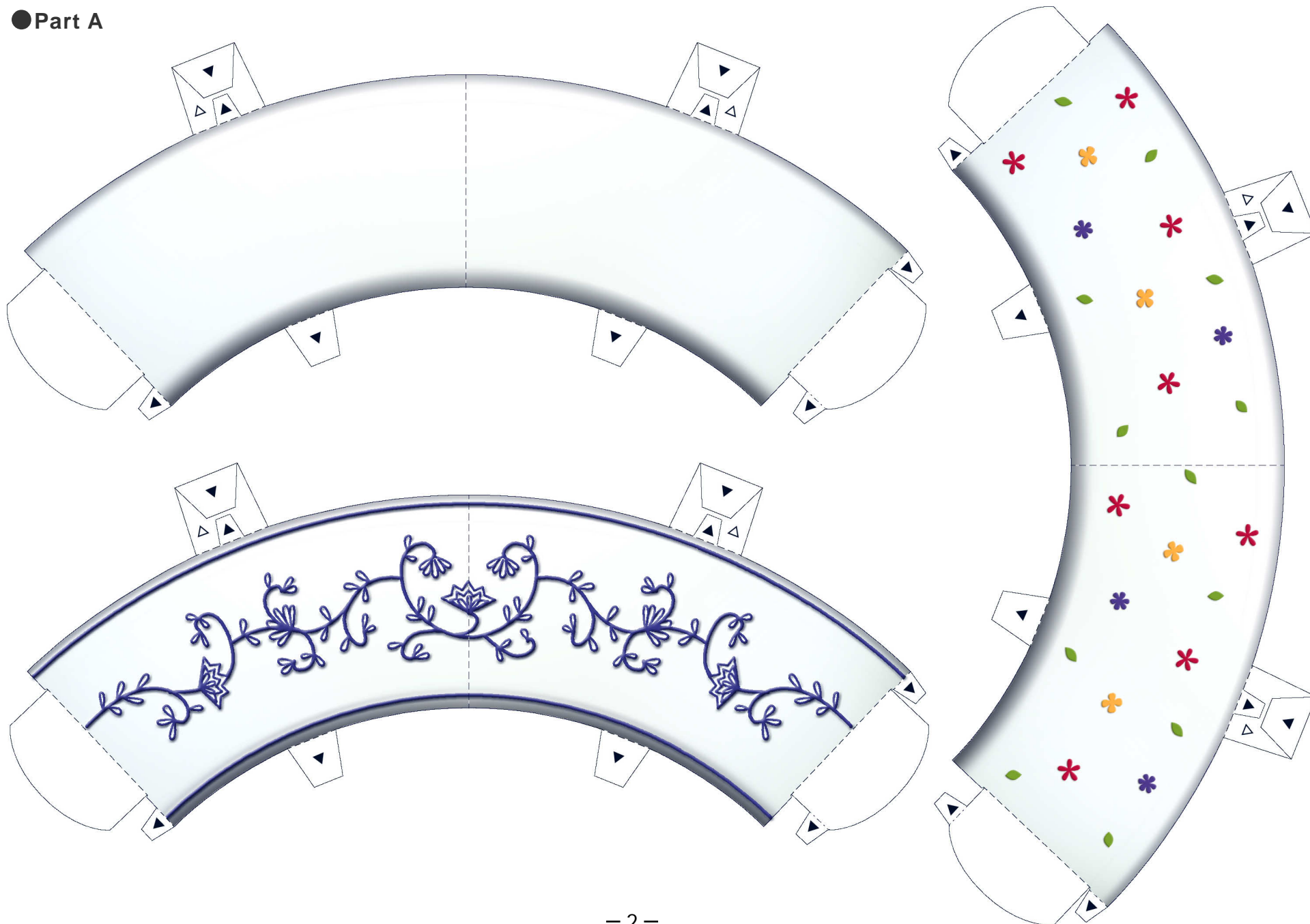
● Support



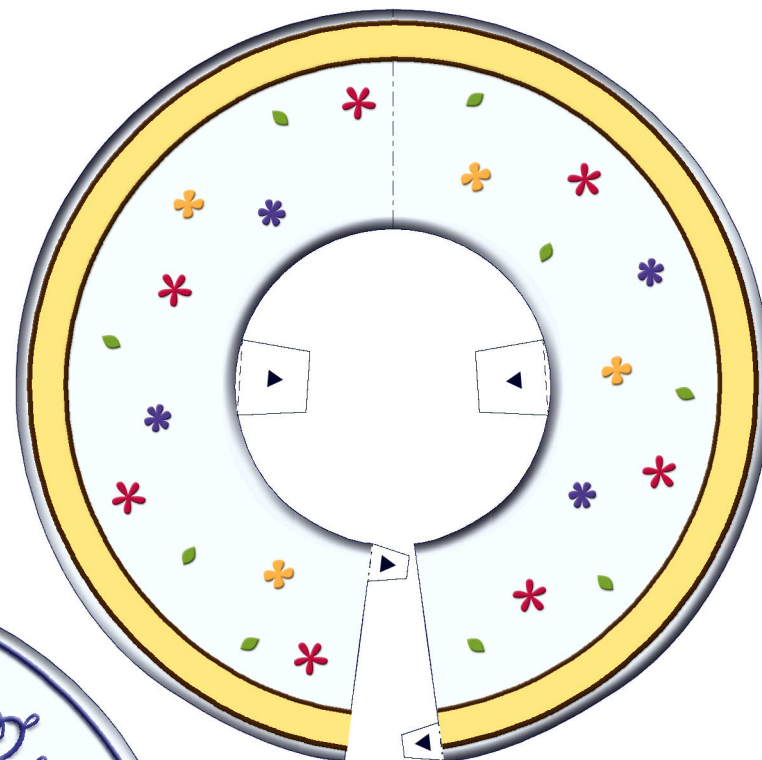
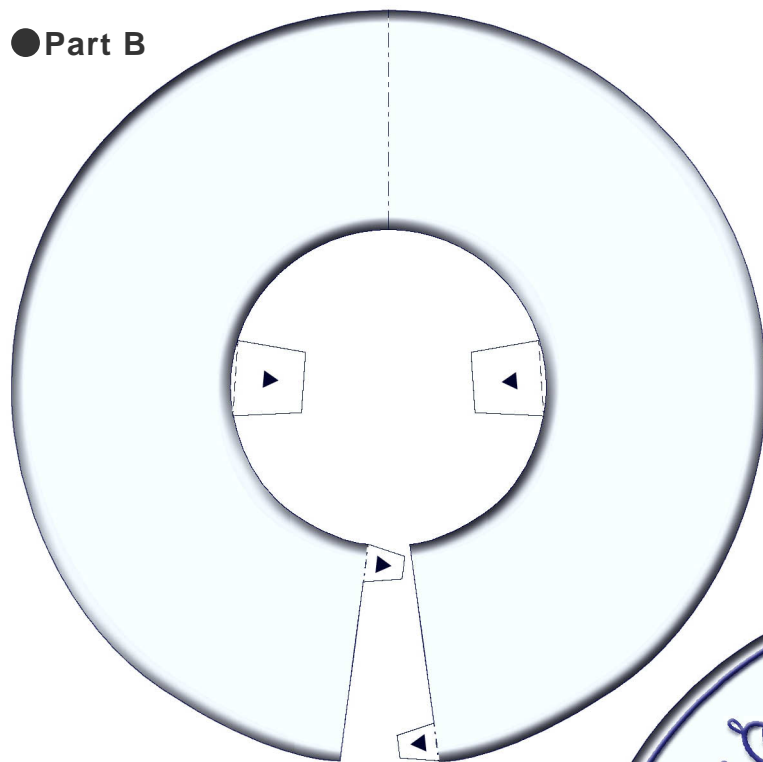
● Spoon



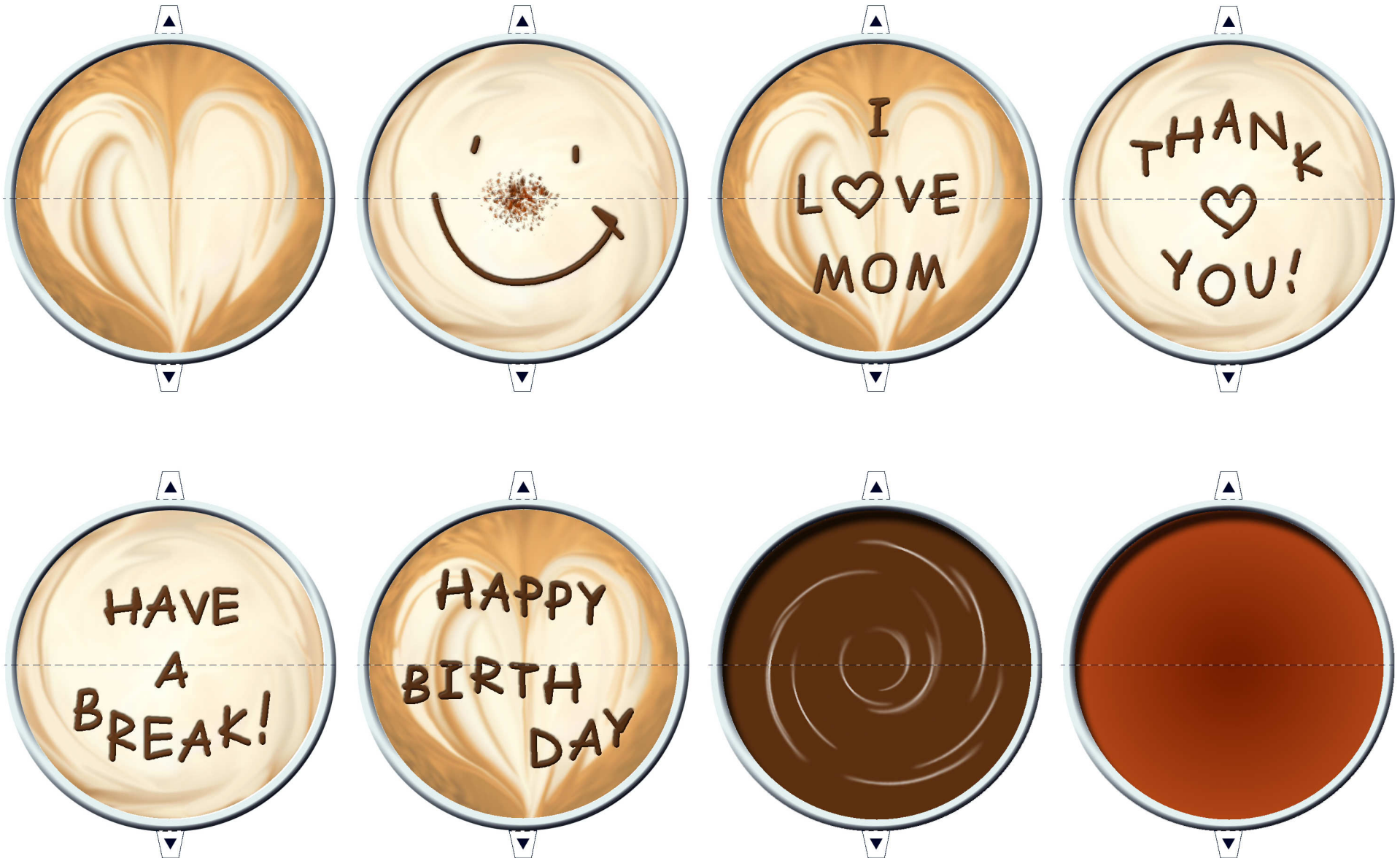
● Part A



● Part B



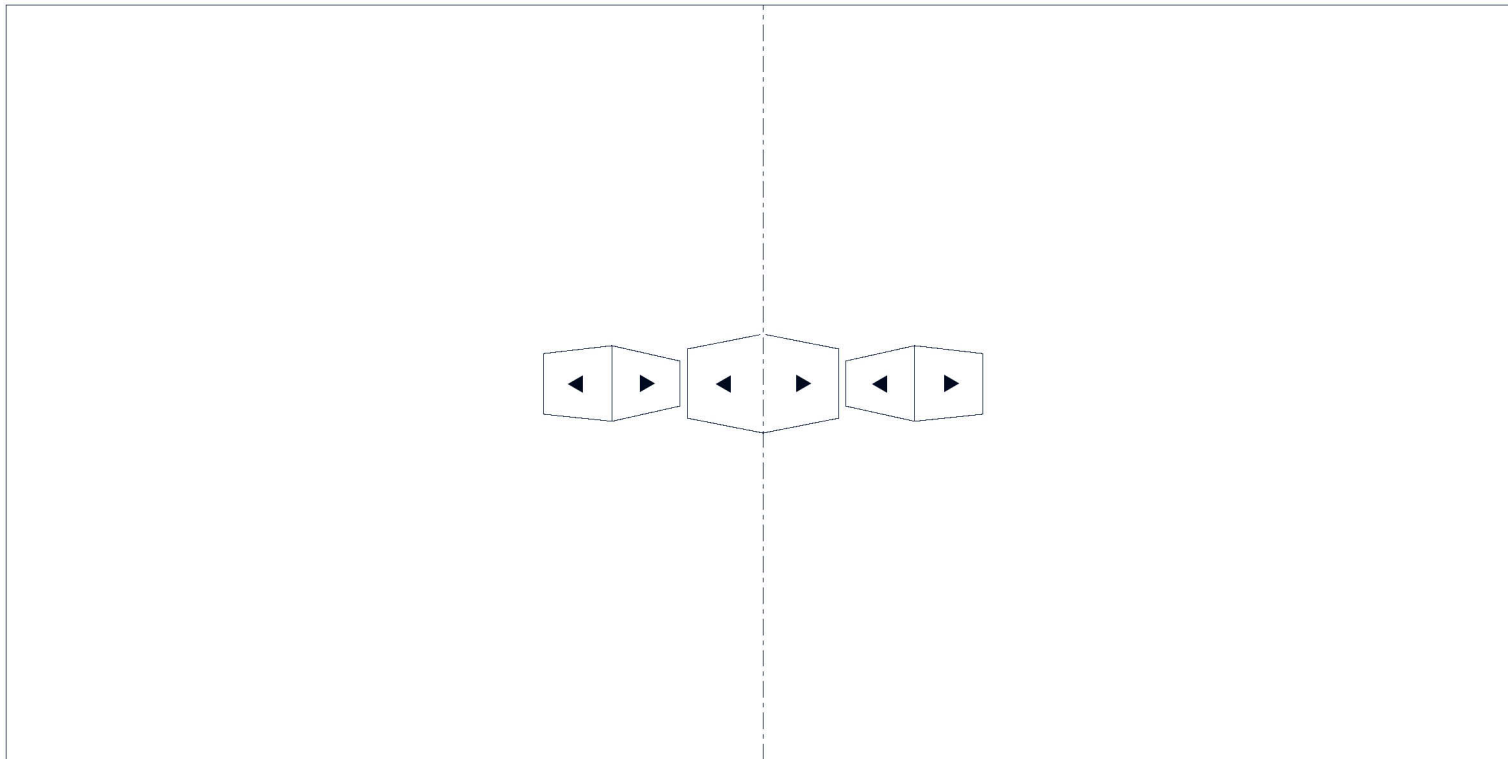
●Part D



● Stickers



● Base



● Front cover (Mother's Day)



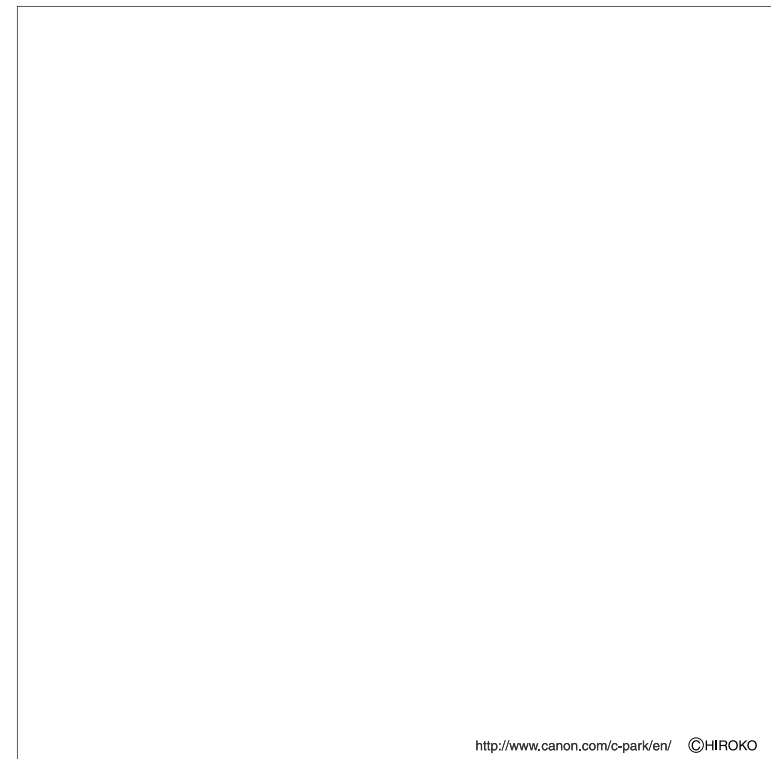
● Front cover (Happy Birthday)



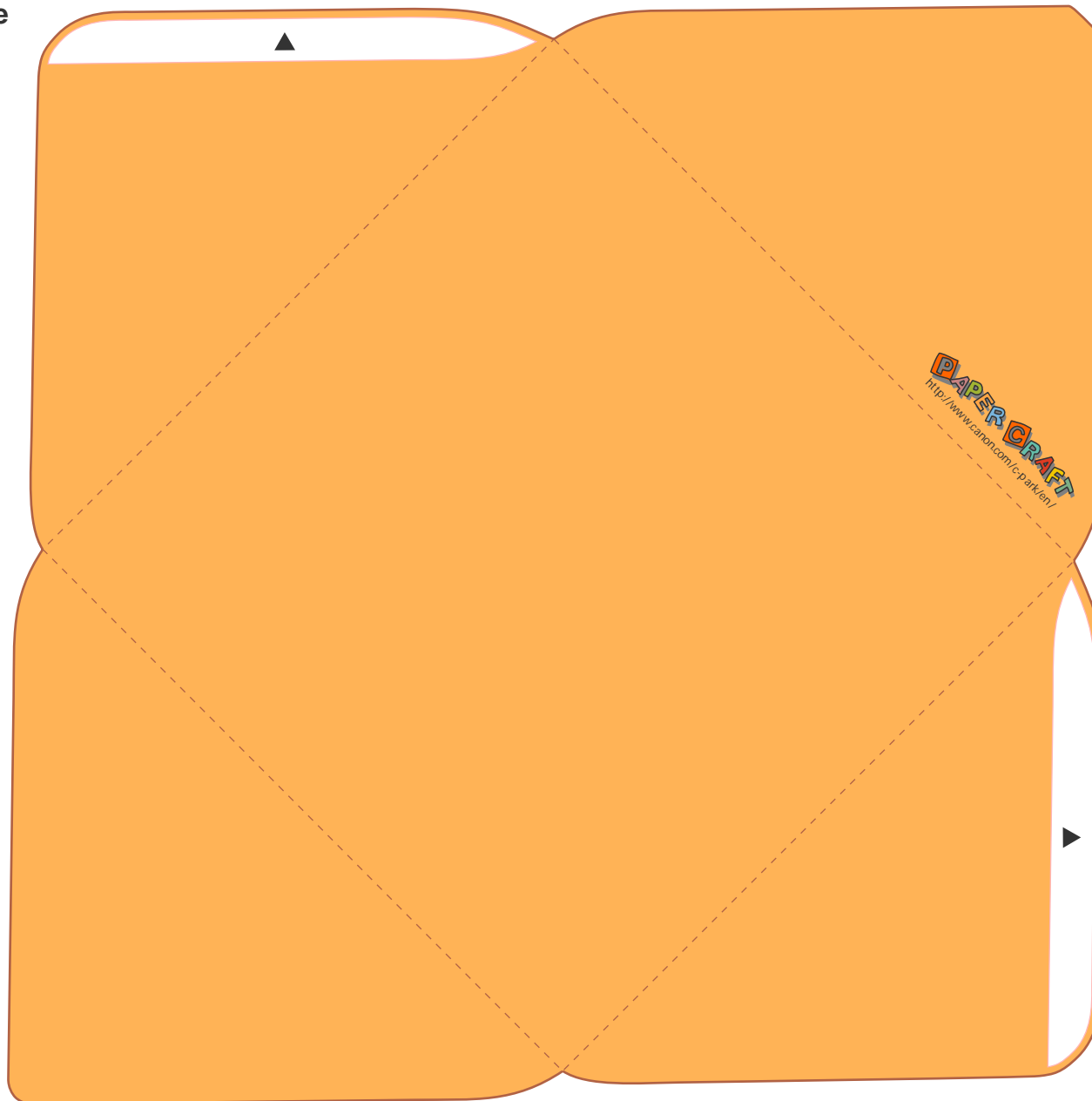
● Front cover (Plain)



● Back cover



● Envelope



Assembly Instructions

